



1. **JILL NEWTON**

Through the Garden Gate

Quilted by: Jill Newton (hand quilted)

Through the Garden Gate was voted 1st in the Viewer's Choice competition.

Slipping the gate latch into our secret gate is always a delight. Sitting still and watching the resident pair of shingle back lizards rustling in the undergrowth, making their way to the big blue saucer of water. Tiny birds darting in and out of the large roses and lavender bushes watched overhead by the galahs with their babies in the big gum tree. Our secret garden inspires quilts, embroidery and stories — a wonderful place to be.



2. **SHENNAH JOINER**

El Camino Real

Size: 281.5 x 228.5 cm / 110.75 x 90 inches

Pattern: Nancy Rink Designs

Quilted by: Shennah Joiner, Foxlow Fabrics

El Camino Real was voted 2nd in the Viewer's Choice competition.

El Camino Real has been a challenge that I started as a BOM (Block of the Month). I began this quilt to improve my piecing and to 'step outside my comfort zone'. All my previous quilts have been traditional in colour and theme. This quilt tells the story of Franciscan missions along the el Camino Real (King's Highway) in California. I completed the first block and then put it aside as I considered it too time consuming and fussy. 2018 saw me declare that I would complete an unfinished quilt for each new quilt that I started. This was the first one out of the boxes! It took me nearly ninety hours to piece the quilt top and many more to quilt it. I have used minimal quilting on the blocks in order to showcase the rich fabrics and patterns whilst using flowing designs in the large open areas to give the quilt some feature sections. I have really enjoyed this project.



3. **MARGARET FERRETT**

Blooming Blue

Size: 216 cm / 85 inches square

Designer: Jinny Byers

Quilted by: Terina Walton, Quilts with Attitude

Blooming Blue was voted 3rd in the Viewer's Choice competition.

This quilt was made from a kit designed by Jinny Byers and using fabric also designed by her. I just love Jinny Byers fabric, so, when I saw this kit, I just had to have it. Then I had to make it which, at times, proved quite a challenge. Construction included a variety of techniques including templates, rotary cutting, hand and machine piecing, foundation piecing and needle turn applique. Over the years I have learnt most of these techniques, but there's always something else to learn. Fortunately, my kit purchase included online tutorials from Jinny and I added a few more tricks to my patchwork knowledge.



4. **PETRA GILLAN**

Maple Leaves

Size: 221 x 226 cm / 87 x 89 inches

Maple Leaves was voted 4th in the Viewer's Choice competition.



5. **HELEN NEWTON**

Hexagon Hotchpotch

Size: 134.5 x 114.5 cm / 53 x 45 inches

Hexagon Hotchpotch was voted 5th in the Viewer's Choice competition.



6. **JANNIE BROWN**

Goose Tracks

Size: 193 cm / 76 inches square

Pattern: Hoop Sisters

I was inspired to make this quilt to learn new techniques on the embroidery machine with a group of friends. I love the colours and have learnt a lot. I have also modified some of the techniques to make the seams less bulky on future quilts.



7. **JANNIE BROWN**

Lots of Steps

Size: 195.5 x 206 cm / 77 x 81 inches

This quilt was inspired by the 1", 1½ and 2" Acquilt Strip Cutter (fabric cutting die) for the Go Cutter. I loved the bright colours and thought they would be idea to bring out the step patterns in the quilt. Each block is made of three pieces of fabric to give a 3" square. The quilt took four years to make.



8. **JANNIE BROWN**

North Pole Christmas

Size: 91.5 x 78.5 cm / 36 x 31 inches

Pattern: Anita Good Designs

I was inspired to make this quilt when I saw one hanging at a craft fair in Sydney. Most of it is embroidered and there are also a few pieces of fabric laid down and embroidered over. I bought the embroidery pattern and chose my snow fabric to reflect the sparkling snow. The sky fabric has gold specks to resemble stars in the sky as well as embroidered stars.



9. **KERRY CASSIDY**
Multi-Coloured



10. **MARGARET FERRETT**

Stripe Me Lucky

Size: 113 x 92.5 cm / 44.5 x 36.5 inches

Quilted by: Margaret Ferrett

Made from a single piece of striped fabric, the trick is in the cutting and subsequent piercing. The result comes out as squares and crosses. I used my left-over fabric to piece the backing, ending with only a small piece left.

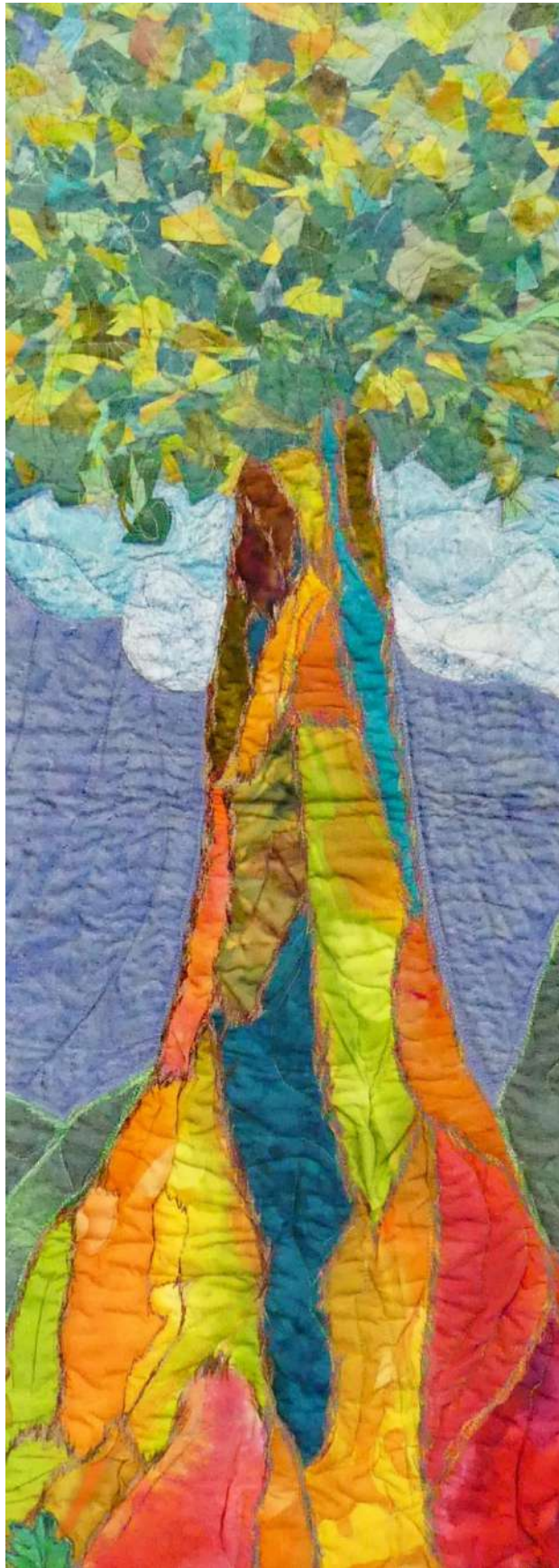


11. **JENNY FISH**

Misty Cottage: Dreaming of Leprechauns

Size: 52 x 44 cm / 20.5 x 17.25 inches

Using the theme of a clover leaf, I experimented with a skewy leprechaun house in the meadows, approached by a little path. It is viewed from the other side of a river with fog and mist in the foreground. Fun, but I kept adding more bits to it and am not sure it will ever be finished. I think it is more likely to go to my granddaughter's child, if she has one sometime in the future.



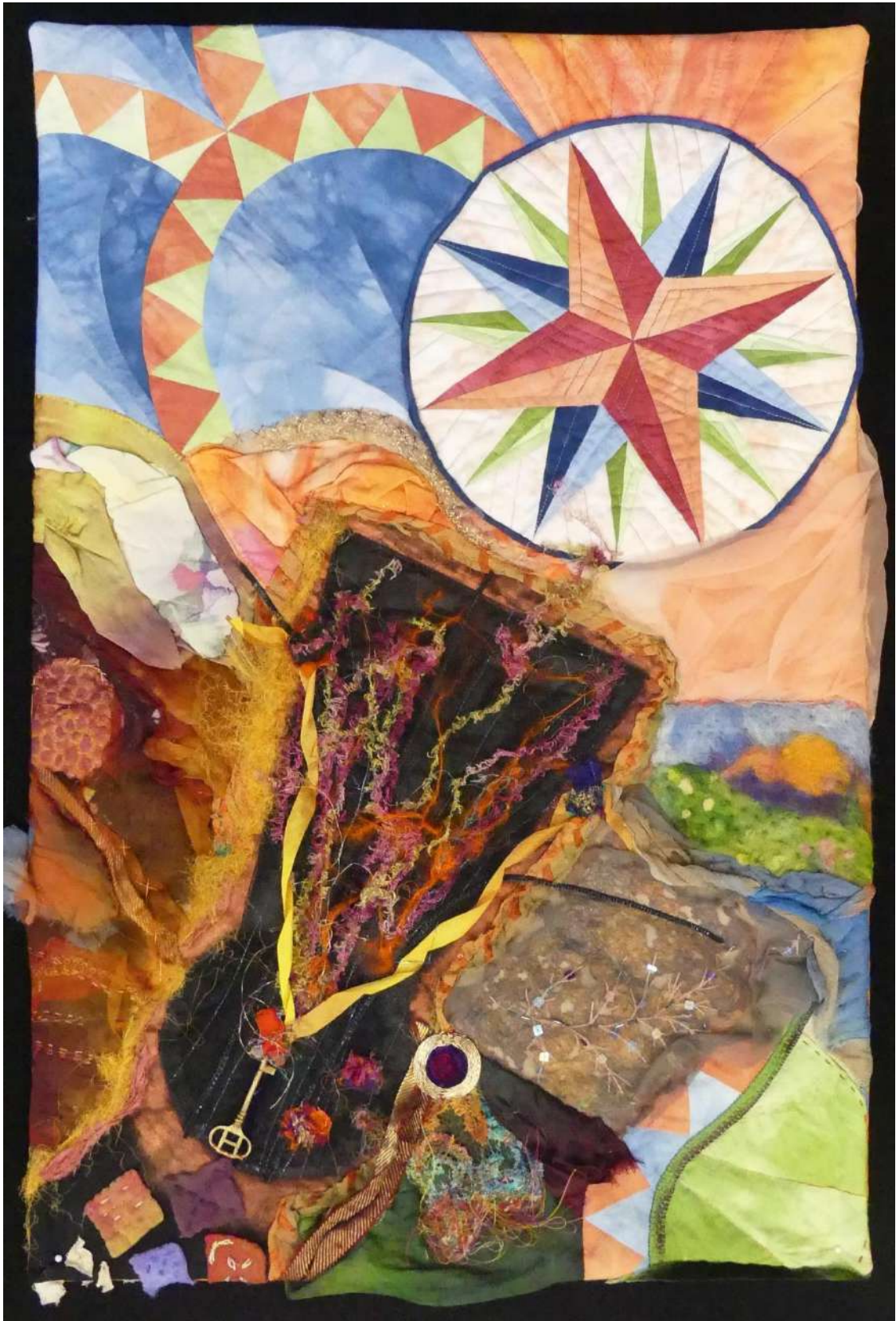
12. **JENNY FISH**

Rainbow Eucalypt

Size: 100 x 40 cm / 39.25 x 15.75 inches

Quilted by: Jenny Fish

Rainbow eucalypts have amazing colours in their bark, often many colours on one tree at the right time of the year. They are also very tall, hence the perspective of looking up at the canopy far above.



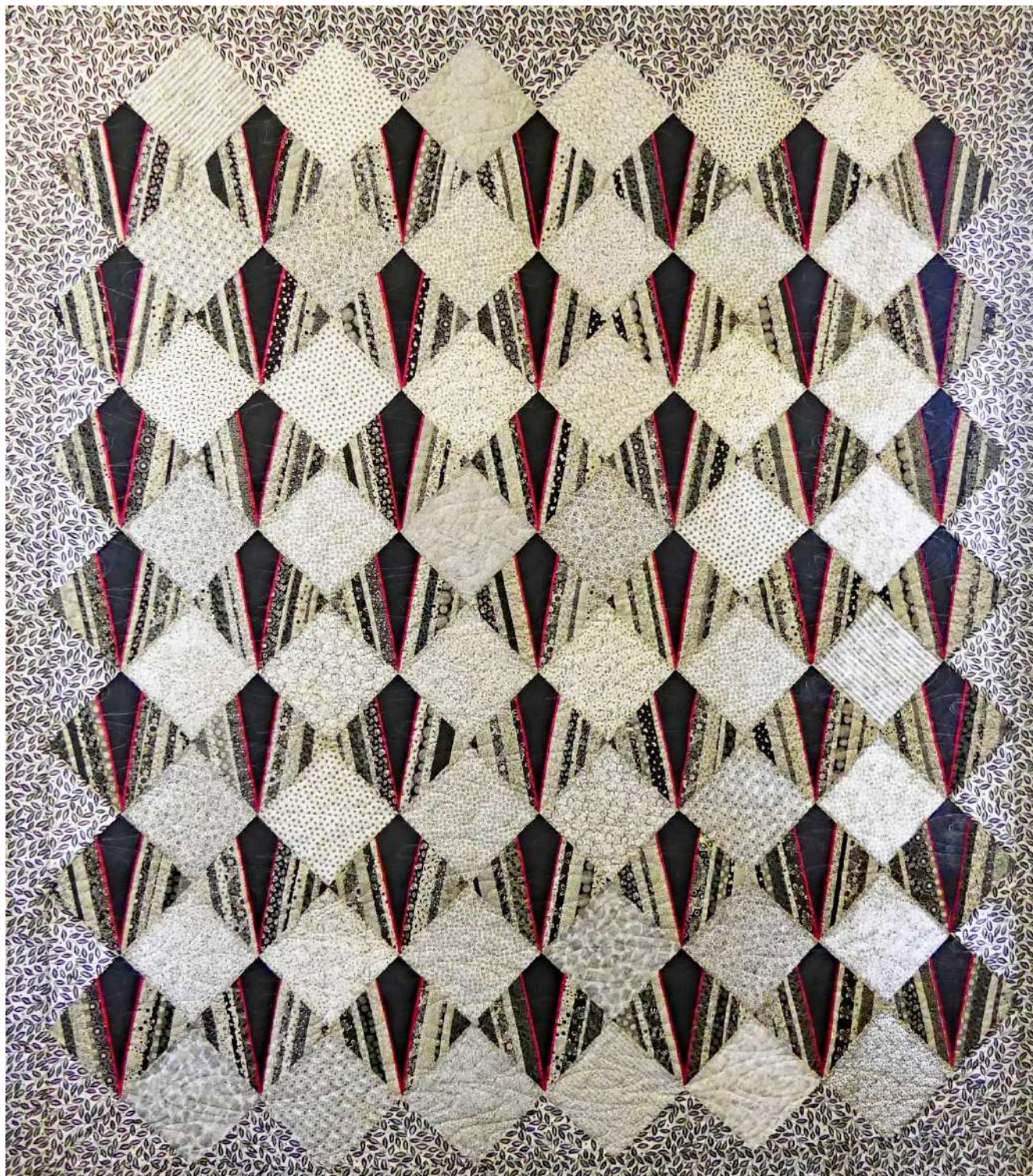
13. **JENNY FISH**

Unlocked: Finding My Way Back

Size: 73 x 48 cm / 28.75 x 19 inches

Art quilt made with mixed techniques, textiles and embellishments

I made this quilt earlier this year. It was part of my grieving/recovery process after the nursing and death of my 101 year old mother-in-law, Rita Fish. She had lived with us for eighteen years. The upside-down black keyhole represents the creative wilderness I had fallen into, the key unlocking the door and my inner self bursting out, ready to start creating again. It was fun and therapeutic to play with all sorts of things and making them into a somewhat cohesive whole.



14. **LEANNE GRAHAME**

Daughter's Delight

Quilted by: Deborah Shaw, Shawly Sensational

After learning the *String Quilt* technique, I just had to have a go! I loved buying random black and white prints and adding the dash of hot pink. The arrows pointing upwards reflect the ever-positive attitude of my darling daughter.



15. **ELKE HUGHES**

Bright Hexies

Size: 188 x 139.5 cm / 74 x 55 inches

Designer: Jenny Doan, Missouri Star Quilt Co.

Quilted by: Caroline Conlan, History in the Making

Spring has sprung! I loved the fresh colours on a white background and it was a lot of fun to make. The fabrics came in a kit.



16. **ELKE HUGHES**

Ella's Quilt

Size: 157.5 x 134.5 cm / 62 x 53 inches

Quilted by: Caroline Conlan, History in the Making

This quilt was made for my granddaughter, Ella, who asked for a black and white quilt but I decided to add a splash of colour — a labour of love.



17. **ELKE HUGHES**

Painted Garden

Size: 180.5 x 147.5 cm / 71 x 58 inches

Designer: Jenny Doan, Missouri Star Quilt Co.

Quilted by: Caroline Conlan, History in the Making

I loved the bright colours which reminded me of a lovely summer garden.



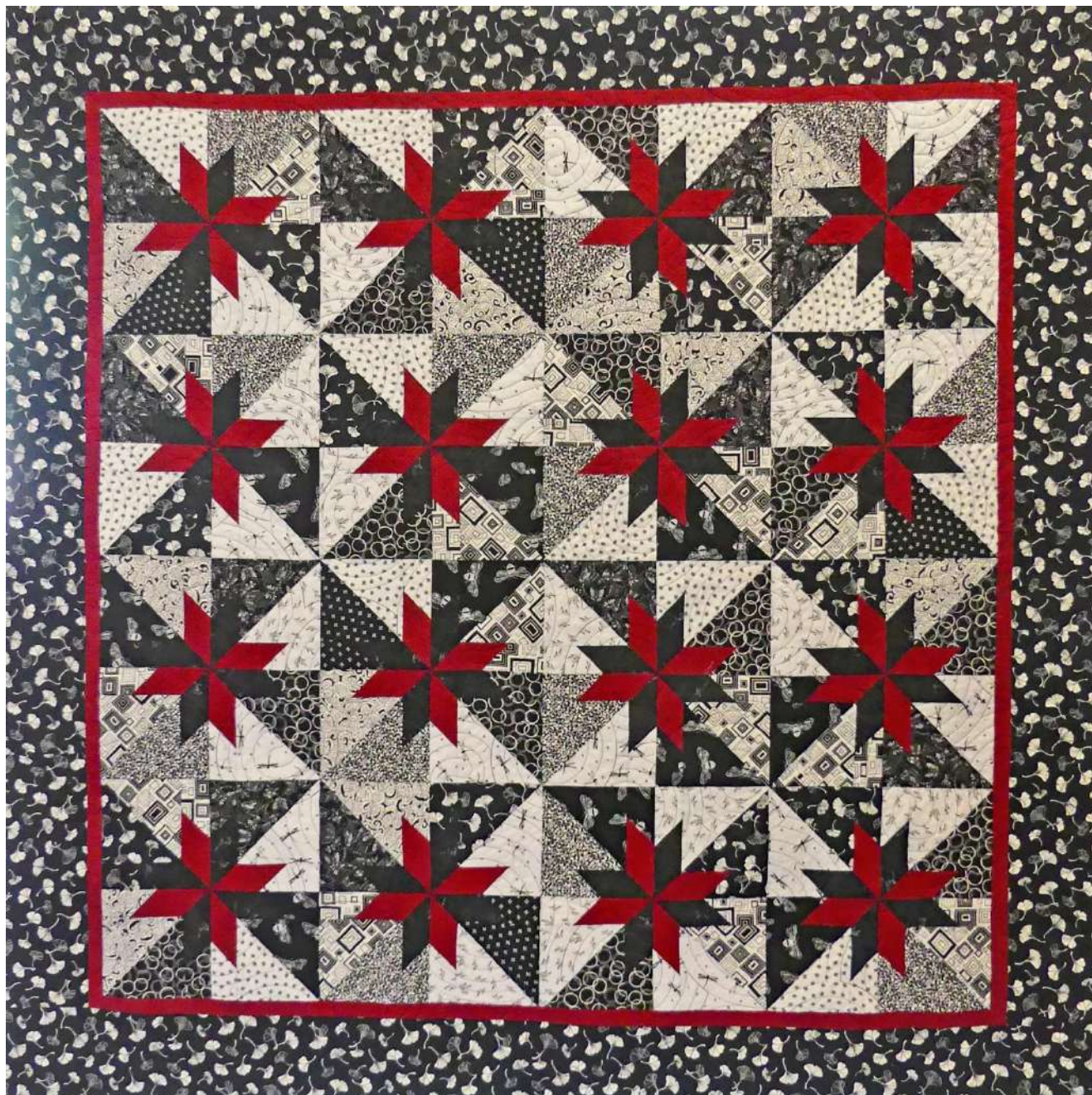
18. **SHENNAH JOINER**

Echoed Autumn Windows

Size: 133.5 cm / 52.5 inches square

Quilted by: Shennah Joiner, Foxlow Fabrics

Echoed Autumn Windows is another project that I started several years ago. It began as a sampler made in a class and lay as unfinished blocks in a box up on the shelf. The fabric was purchased many years ago and is a favourite of mine. I used additional fabric to frame the blocks and then sewed them together to make this wall hanging. I quilted this quilt myself using matching thread with both ruler work and automation. This little quilt is going on my sewing room wall as looking at these fabrics cheers me up.



19. **VAL JORDON**

Victoria

Size: 178 cm / 70 inches square

I found the pattern for this quilt in a magazine while on holidays in Victoria. I then started looking for some fabric — it's always a good thing to check out patchwork shops when on holidays! After four different patchwork shops I had my fabric so I have called this quilt, *Victoria*.



20. **ROBYN PODMORE**

Bargello

Size: 200 x 160 cm / 78.75 x 63 inches

This is another quilting retreat design and I relished the challenge. Civil War fabrics are another favourite and I'm happy with the end result.



21. **ROBYN PODMORE**

Robyn's Quilt

Size: 215 cm / 84.75 inches square



22. **ROBYN PODMORE**

Sally's Quilt

Size: 175 cm / 69 inches square

I made this quilt for my daughter, Sally, who is a graphic artist and the design with multi-colours appealed to her. I think it shows how effective the use of plain colours can be to emphasise a design.



23. **JENNY REYNOLDS**

Dazzling Diamonds

Size: 160 x 130 cm / 63 x 51.25 inches



24. **JENNY REYNOLDS**

One More for Anne

Size: 144 cm / 56.75 inches square



25. **ELIZABETH ROBERTSON**

Feathers and Dreams

Size: 188 x 203 cm / 74 x 80 inches



26. **ELIZABETH ROBERTSON**
Galatic Swirl
Size: 193 cm / 76 inches square



27. **ELIZABETH ROBERTSON**

Lovers' Knot

Size: 218.5 x 206 cm / 86 x 81 inches



28. **ELIZABETH ROBERTSON**
Oriental Shadows
Size: 198 cm / 78 inches square



29. **ELIZABETH ROBERTSON**

Scrappy Braid

Size: 203 x 198 cm / 80 x 78 inches



30. **ELIZABETH ROBERTSON**
Stack and Slash Times 5
Size: 198 cm / 78 inches square



31. **PETA ROXBURGH**

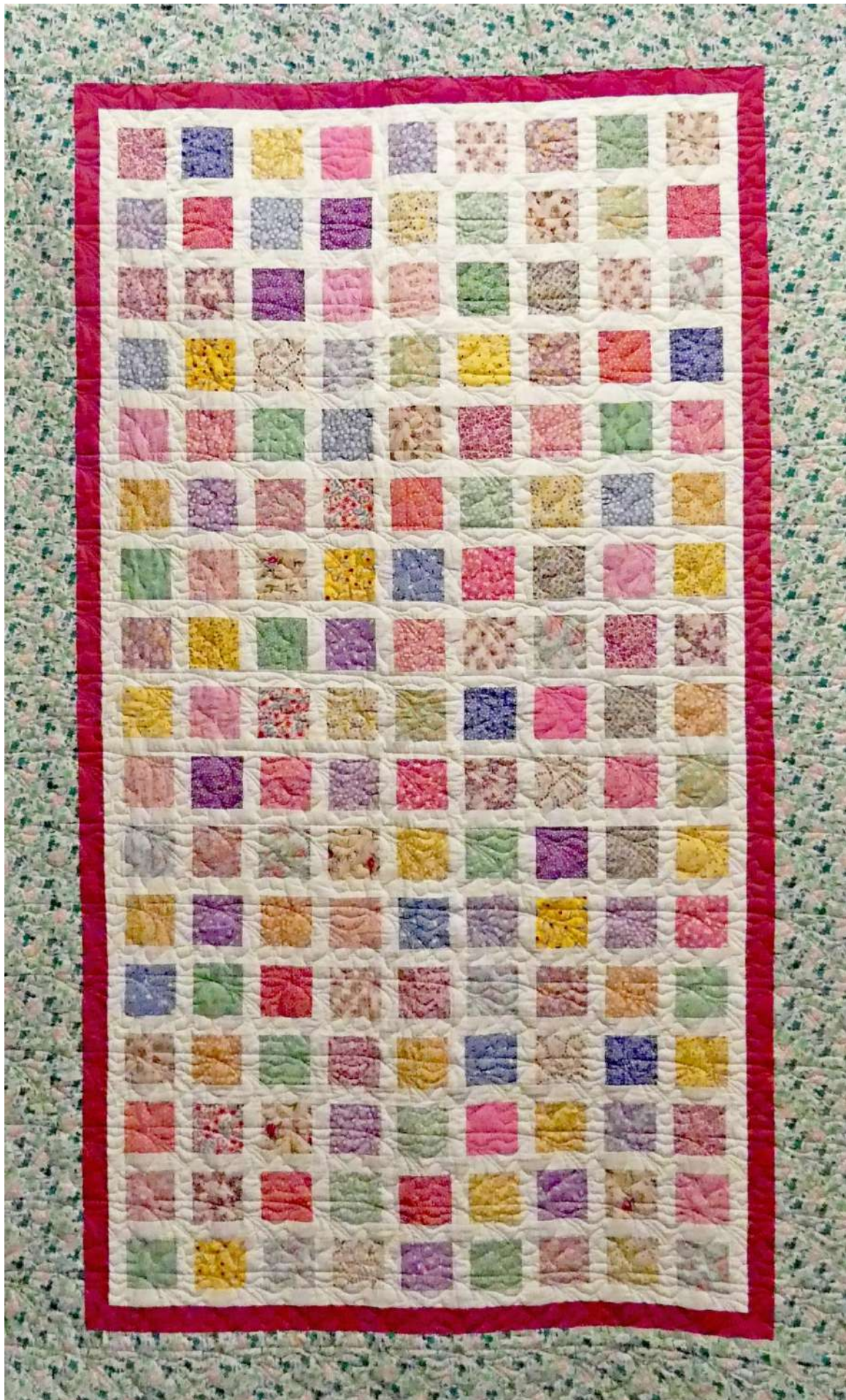
Childhood Memories Preserved

Size: 139.5 x 132 cm / 55 x 52 inches

Designer: Elizabeth Hartman

Quilted by: June Ely, Bluebell A1 Quilting

In 1993 I had a vision of a quilt made with remnants of childhood clothing. Each quilt would be created from my sibling's clothes that I felt held special memories of occasions, celebrations or just their favourite outfit so that my sisters and brothers could one day look back on the quilt and remember. Twenty-five years on, I finally started to piece together the fabrics and pass them to my siblings when they had their first babies as textured play mats. This is the third quilt and most intricate one that I have made using my own childhood clothing. There are pieces of school and sports uniforms, summer outfits and special function fabrics. I have tried to use every last bit of fabric to even finish the binding, which ideally is the essence of quilting!



32. **DEBORAH SHAW**
30's Fabrics



33. **DEBORAH SHAW**
Happier Times



34. **DEBORAH SHAW**
Houses



35. **DEBORAH SHAW**
Mauve and Green



36. **DEBORAH SHAW**
Snowmen



37. **DEBORAH SHAW**
Turning Japanese



38. **ANNE SIMMUL**

Lilac Haze

Size: 200.5 x 181.5 cm / 79 x 71.5 inches

Quilted by Deborah Shaw, Shawly Sensational

This quilt is a gift for my son and daughter-in-law who were married in Canada two years ago and now live in Toronto. When asked what colours she would like in a quilt, my daughter-in-law requested mauve and soft tonings. It will be a surprise for them when they see it next year when they travel here for a visit.



39. **ANNE SIMMUL**

Stepping Stones

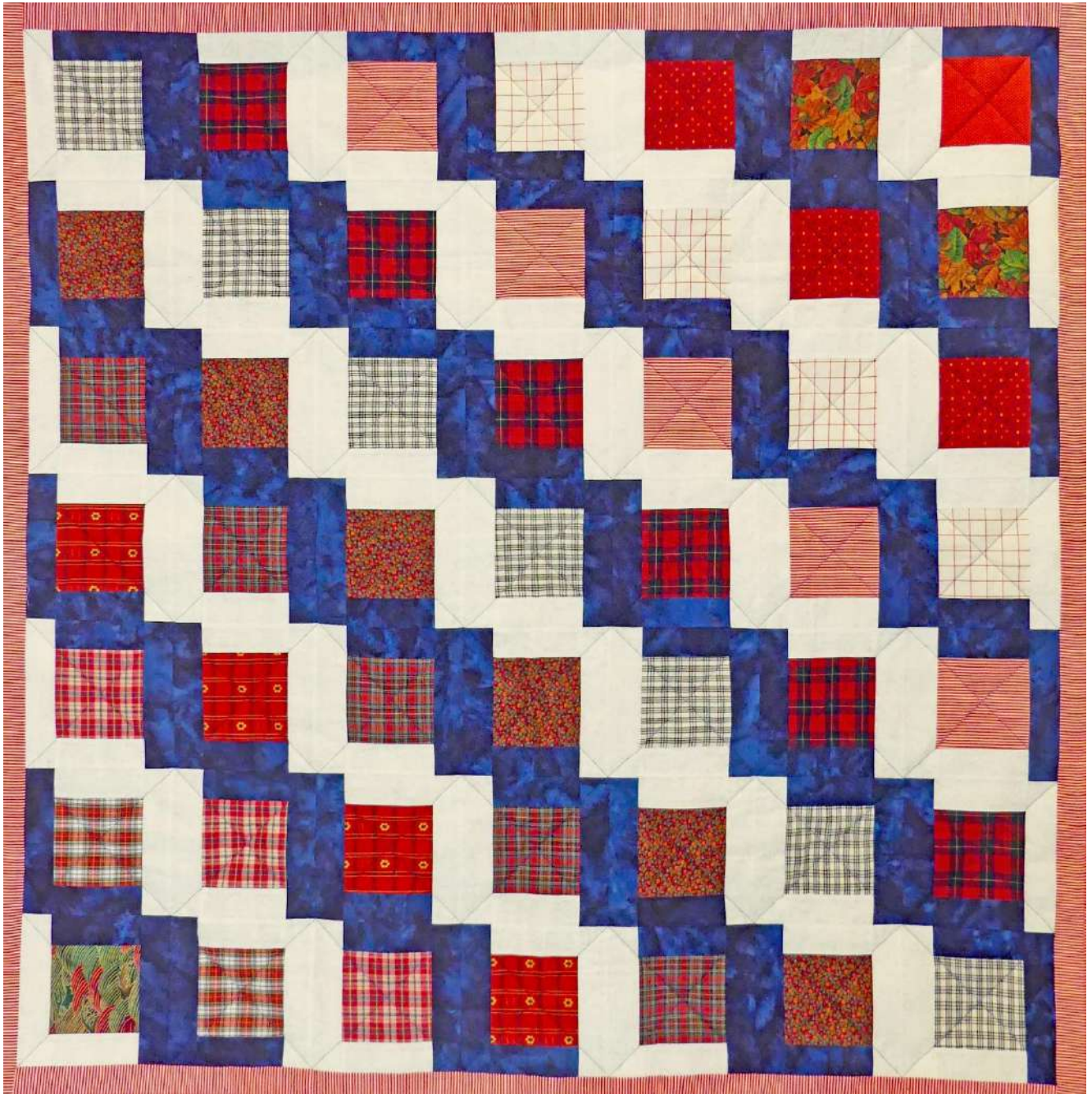
Size: 198 cm / 78 inches square

Quilted by: Deborah Shaw, Shawly Sensational

This quilt is a present for my daughter and son-in-law who were married two years ago. My daughter chose the colours which were influenced by a holiday in Bali and the quilt was stared at the Warrambui Retreat in 2017.



40. **ANNE SIMMUL**
White and Blue Squares



41. **TRUDI TRITSCHLER**

Friday Friends Comfort Quilt

Size: 139.5 cm / 55 inches square

Designer: Beth Miller

Quilted by: Jannie Brown

Made with love by a dedicated group of quilters called Friday Friends.



42. **TRUDI TRITSCHLER**

My Stairway to the Stars

Size: 203 x 170 cm / 80 x 67 inches

Pattern: *Fire Escape* by Atkinson Designs

Quilted by: Trudi Tritschler (domestic sewing machine)

I began this quilt at the Warrambui Retreat in 2015. I picked the turquoise paisley print first and then selected the other prints to go with it. Two fabrics featured stars, thus *My Stairway to the Stars*. All fabric came from my stash.